

# Stanton College Preparatory School

A National Model School

1149 West 13th Street, Jacksonville, Florida 32209  
(904) 630-6760 FAX (904) 630-6754

<http://www.stantoncollegeprep.org>

Counselor student assignments: Grace Galvin (9th) Ext 118; Kimberly Borree (IB Coordinator) Ext 117; Janice Waters (A-L) Ext 116; Bob Turba (K-Z) Ext 119

**COMMUNITY CHARACTERISTICS:** Jacksonville population (2003) 817,480; 65.8% White, 27.8% Black, 7.2% Other; average family income - \$40,703; wholesale/retail trade and personal/health/hospitality services comprise 69% of employment activity; location is Northeast Florida; Jacksonville is the largest city in the US in square miles and encompasses all of Duval County; the 10th largest in population.

**DUVAL COUNTY SCHOOL SYSTEM:** 105 elementary (K-5), 26 middle (6-8), 17 secondary (9-12), 3 exceptional education centers, 2 academies of technology; 5 special schools; 5 charter schools.

**STANTON COLLEGE PREPARATORY SCHOOL:** opened in 1981 as Duval County's first magnet school. 2007-2008 enrollment: 9th - 445; 10th - 361; 11th - 324; 12th - 327; Total - 1457. The mission of the school is to provide a rigorous academic program of all advanced academic courses supplemented by philanthropic, artistic, and forensic activities; accredited by the Florida State Department of Education and the Southern Association of Colleges and Schools. Member of the National Association of College Admission Counseling and complies with the NACAC Statement of Principles of Good Practice.

**GRADING SYSTEM:** A (Excellent) = 90 - 100, B (Very Good) = 80 - 89; C (Average) = 70 - 79; D (Unsatisfactory) = 60-69; F (Failing) < 60.

**CLASS RANK:** computed at the end of the junior year, using grades 9-11, or six semesters, and at the end of the 4th quarter of 12th; determined by grade point average using marks earned in all subjects taken; advanced, honors, IB, and AP courses are weighted with one additional point: A=5, B=4, C=3, D=2, F=0; standard courses: A=4, B=3, C=2, D=1, F=0.

**SPECIAL CURRICULUM FEATURES:** only advanced, honors, IB, or AP courses are offered in English, Mathematics, Science, and Social Studies. In May, 2007, Stanton administered 2514 AP Exams to 1156 candidates. AP/IB courses offered in 2007-2008 and number of sections:

AP Art History - 1	AP Spanish Lang - 4
Art I & II A&B - IB - 2	AP Biology - 4
Theatre I&II IB - 2	AP Chemistry - 1
AP Calculus AB - 7	AP Physics B - 4
AP Calculus BC - 1	AP Environmental - 4
AP Statistics - 8	AP U S History - 14
Math Studies IB - 2	AP European History - 16
AP Computer Science A/AB - 2	AP World History - 19
AP English Lang/Comp - 14	AP/IB Psychology - 8
AP English Lit/Comp - 14	AP Micro Econ - 1
AP French Language - 1	AP Macro Econ - 11
French V - IB - 1	AP US Govt/Politics - 10
AP German Lang - 1	AP Comp Govt Politics - 1
German V-IB - 1	Contemp History IB - 6
AP Latin - 1	Philosophy IB - 2
Spanish V - IB - 4	AP Human Geography - 2

College Dual Enrollment: Humanities; Anatomy; Spanish

**INTERNATIONAL BACCALAUREATE (IB):** The IB program is an internationally recognized, rigorous, pre-university liberal arts course of study that meets the needs of highly motivated and academically oriented secondary students. Beyond intellectual rigor and high academic standards, strong emphasis is placed on the ideals of international understanding and responsible citizenship.

Stanton's IB Program, started in 1983, was one of the first diploma programs in the state of Florida. Over one third of Stanton's student population is enrolled in the IB program. Worldwide, approximately 80% of the candidates attempting to earn the diploma are successful. At Stanton our success rate in earning the diploma is consistently around 90%. For more information on the IB curriculum, please visit the Stanton website.

**Class of 2007**  
**337 Students**  
**156 Male**  
**181 Female**

**61.2% White**  
**17.6% African American**  
**5.1% Hispanic**  
**13.8% Asian**  
**2.4% Other**

**National Merit Scholarship Program**

**19 Merit Finalists**  
**35 Merit Commended**  
**7 Achievement Finalist**  
**5 Achievement Commended**  
**5 Hispanic Scholars**

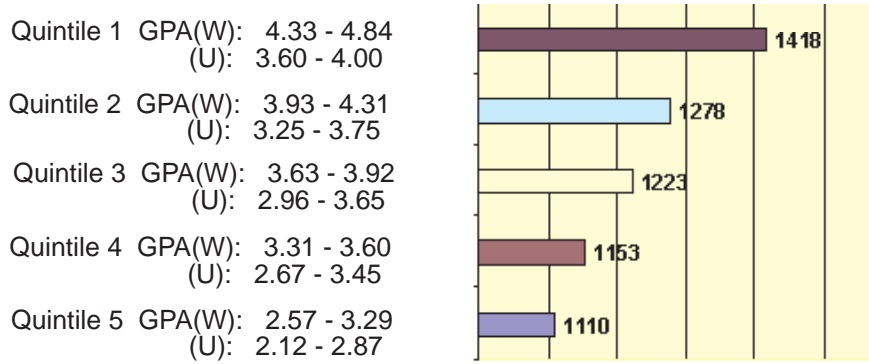
## Test Results CEEB# 100775

**SAT I - Middle 50% (Mean) N=333**  
 Verbal 570-690 (Mean 627) Math 570-670 (Mean 621)

**ACT Scores - Middle 50% (Mean) N=191**  
 English: 22-29 (26) Math: 23-28 (26) Reading: 23-30 (27)  
 Science Reasoning: 22-27 (25) Composite: 23-29 (26)

### GPA/SAT I Quintile Characteristic Comparison Chart

The GPA ranges within each Quintile are Unweighted (U) and Weighted (W) on a 4.0 scale



**Grading Patterns:** Percentage of final grades reported for 2006-2007 (Note: "minus" and "plus" grades are included in each grade):  
 A - 44.2%; B - 29.7%; C - 19.2%; D - 4.6%; F - 2.3%

